

Abrex-System®

VIPERX®
mod.: 3B

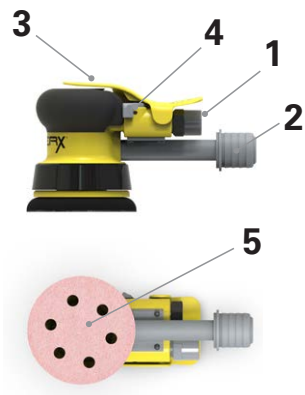


OPERATION AND MAINTENANCE MANUAL

The ViperX model with the 3B orbit a pneumatic sander designed and built for sanding small surfaces.

Model	ViperX3B
Orbit	3 mm
Ø Pad	75mm
Holes	6 holes
RPM	6500 - 11000
Weight	675 g
Working pressure	6.2 Bar – 90 PSI
Air consumption	340 l/min
Air inlet	¼" Gas
Pad thread	M8
Extraction	Centralized
Noise:	82 db A
Vibrations max aeq sum:	3B = 9.54 m/s ²

USE: connect ViperX to the compressed air supply (1) using an internal Ø8 mm and external Ø10 mm tube. Connect the Ø 29 mm dust extraction hose to the swivel connector (2). Place ViperX on the surface to be sanded, hold it firmly and press on the start lever (3) with the palm of the hand to start the pad rotating. The side lever (4) adjusts the rotation speed (RPM). ViperX stops rotating when you lift the palm of your hand from the start lever. To replace the pad, remove the air and extraction hoses, unscrew the central M8 screw (5), remove the worn pad, position the new one in place and tighten the M8 screw.



REPLACEMENT PADS

<i>Pad Model</i>	<i>Screw thread</i>	<i>Weight</i>	<i>Ø</i>	<i>Holes</i>	<i>Hardness</i>	<i>Velcro® System</i>	<i>Computer Code</i>
FUSION	M 8	675 g	75 mm	6	Medium	●	SVIPER075F1

MAINTENANCE: periodically lubricate the air and extraction connections with pneumatic oil (use Orlen Pneumatic VG 32 oil, ISO viscosity grade: 32). After each use, perform general cleaning and check that the start/stop lever is working. Do not use liquids such as water or solvents. If any abnormality is noticed in the rotation (RPM) contact Abrex-System.

DISPOSAL: separate the components according to type and material. Take them to authorized disposal facilities.



DECLARATION OF CONFORMITY

Abrex System Srl, via del Viticolotore, 11, Loc. Poggio Piccolo, 40023 Castel Guelfo di Bologna (BO), Italy, declares under its sole responsibility that ViperX versions 3B are designed and built in compliance with the following European standards:



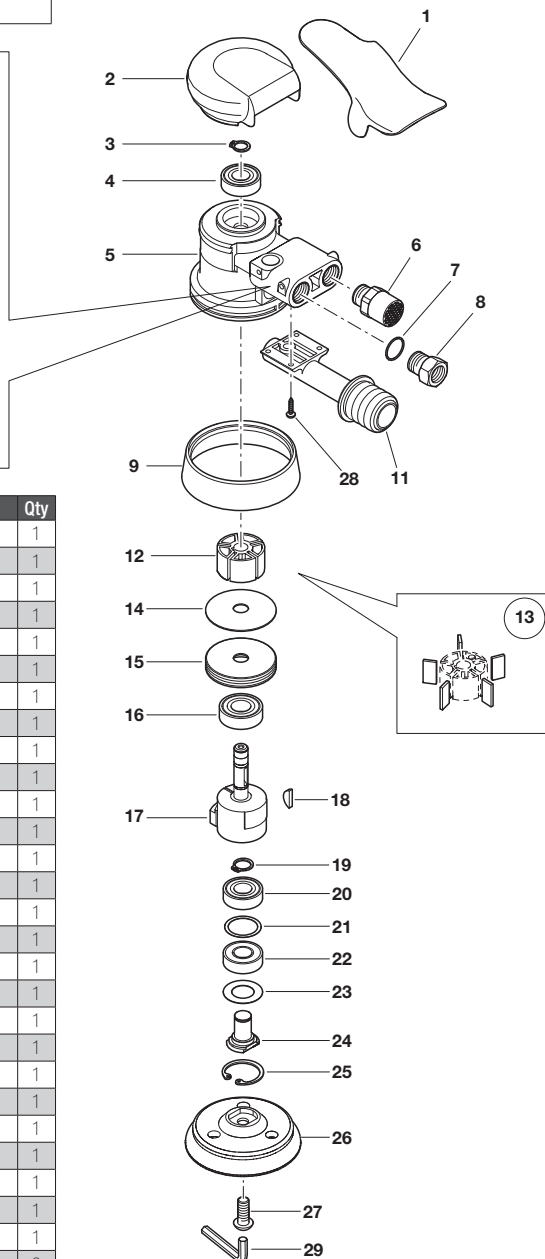
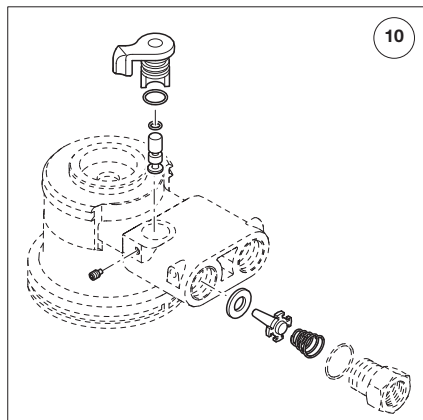
Machine Directive 2006/42/CE
UNI EN ISO 5349:2004
UNI EN ISO 11148-8:2012
UNI EN ISO 4414:2012

WARRANTY: the warranty on ViperX™ tools is for 1 year and is extended to 2 years if the tool is registered within 30 days of purchase. The warranty for industrial use is for 1 year. Each tool must be individually registered on the www.abrex-system-tools.com website. The warranty for ViperX™ **tools covers all manufacturing defects and any defective materials used in the construction of the tool.** For the warranty to be valid, ViperX™ pneumatic tools must be used and stored in accordance with the instructions for use in the manual provided in each tool box. The warranty **does not cover** the tool in the following cases:

- Damage due to accidental shocks or falls.
- Transport damage.
- Improper use in unsuitable environments or exposure to extreme temperatures.
- Sanding of wet materials or in the presence of solvents and/or liquids.
- Damage caused by the use of non-original accessories.
- Damage caused by air flows higher than recommended.
- Failure to lubricate the tool.
- Tool parts subject to wear: bearings, rotors and blades, dust extraction bell, pad.
- Maintenance performed by third parties and/or centres unauthorized by the manufacturer.
- Malfunction due to tampering with the tool by the customer and/or third parties.

Repairs carried out under the warranty do not extend the warranty period.

Model	ViperX3B_
Orbit	3 mm
Ø Pad	75 mm



Pos.	Code	Name	Qty
1	LCHUT_01529	START LEVER	1
2	LCHUT001528	GRIP	1
3	LCHUT000010	COMPRESSION WASHER	1
4	LCHUT1810NS	UPPER BEARING	1
5	LCHUT_01515	MACHINE BODY	1
6	LCHUT001552	SILENCER	1
7	LCHUT01541R	GASKET	1
8	LCHUT01541B	AIR INLET	1
9	LCHUT01543V	EXTRACTION SHROUD	1
10	LCHUT001530	AIR KIT	1
11	LCHUT1352PV	EXTRACTION SLEEVE	1
12	LCHUT011524	ROTOR FOR 2.5/5 mm ORBITAL SANDER	1
13	LCHUT01523S	BLADE KIT (5)	1
14	LCHUT1321CW	PLATE C72 / 0.4 mm	1
15	LCHUTAB1521	ALUMINIUM FLANGE LEFT THREAD	1
16	LCHUT001810	LOWER BEARING	1
17	LCHUT015195	ROCKER FOR 2.5 mm ORBITAL SANDER	1
18	CLINDS68886	TAB	1
19	LCHUT000012	COMPRESSION WASHER	1
20	LCHUT017212	BEARING	1
21	LCHUT261901	SPACER	1
22	LCHUT017211	PROTECTED BEARING	1
23	CRON28X1505	DUST WASHER	1
24	LCHUT01544G	PAD SUPPORT PIN	1
25	LCHUT000028	COMPRESSION WASHER	1
26	SVIPERO75F1	PAD D75	1
27	CVITM8ZN109	GALVANISED SCREW M8	1
28	CVIT0000703	SELF-TAPPING SCREW 3x7 mm	2
29	LCHTU000800	5 mm HEX KEY	

(_) complete the code with the letter of the required color - T= Tiffany - Y=Yellow - W=White